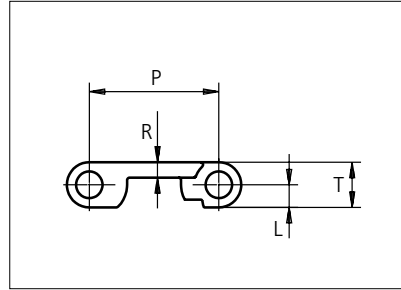


## Plastic Modular Belt

Series **uni CNB** Type **18%**



Straight running belt  
 Nominal pitch: 25.4 mm (1.00 in)  
 Surface type: Flat  
 Surface opening: 18%  
 Backflex radius: 40.0 mm (1.60 in)  
 Pin diameter:  $\varnothing$ 5.0 mm (0.20 in)

|                                  |             |                    |           |      |           |           |      |
|----------------------------------|-------------|--------------------|-----------|------|-----------|-----------|------|
| <b>Belt material &amp; color</b> | PP <b>W</b> | <b>mm</b>          | <b>in</b> |      | <b>mm</b> | <b>in</b> |      |
| <b>Pin material &amp; color</b>  | PP <b>W</b> | <b>P (Nominal)</b> | 25.4      | 1.00 | <b>T</b>  | 8.8       | 0.35 |
|                                  |             | <b>R</b>           | 3.0       | 0.12 | <b>L</b>  | 4.4       | 0.17 |

Non standard material and color: See uni Material and Color Overview.

Alternative pin and lock materials: Pin: PE **W** PA6.6 **B** PBT **LG** SS304 Lockpin: PBT **LG** PA6.6 PP **W** **B** PE

| Belt width |      | Permissible tensile force (Belt/pin material) |      | Belt weight (Belt/pin material) |       | *Min. No. drive sprocket per shaft | Number of wear strips (Min. No.) |                |
|------------|------|---|------|---------------------------------|-------|------------------------------------|----------------------------------|----------------|
|            |      | PP/PP   |      | PP/PP                           |       |                                    | **Carry (pcs)                    | **Return (pcs) |
| mm         | in   | N   | lbf  | kg/m                            | lb/ft |                                    |                                  |                |
| 77         | 3,0  | 539   | 121  | 0,3                             | 0,18  | 2                                  | 2                                | 2              |
| 153        | 6,0  | 1071  | 241  | 0,5                             | 0,36  | 2                                  | 2                                | 2              |
| 229        | 9,0  | 1603  | 360  | 0,8                             | 0,54  | 2                                  | 2                                | 2              |
| 305        | 12,0 | 2135  | 480  | 1,1                             | 0,72  | 3                                  | 3                                | 2              |
| 381        | 15,0 | 2667  | 600  | 1,3                             | 0,90  | 3                                  | 3                                | 2              |
| 457        | 18,0 | 3199  | 719  | 1,6                             | 1,07  | 4                                  | 4                                | 2              |
| 533        | 21,0 | 3731  | 839  | 1,9                             | 1,25  | 4                                  | 4                                | 2              |
| 609        | 24,0 | 4263  | 958  | 2,1                             | 1,43  | 5                                  | 5                                | 3              |
| 685        | 27,0 | 4795  | 1078 | 2,4                             | 1,61  | 5                                  | 5                                | 3              |
| 761        | 30,0 | 5327  | 1197 | 2,7                             | 1,79  | 6                                  | 6                                | 3              |
| 837        | 33,0 | 5859  | 1317 | 2,9                             | 1,97  | 6                                  | 6                                | 3              |
| 913        | 35,9 | 6391  | 1437 | 3,2                             | 2,15  | 7                                  | 7                                | 4              |
| 989        | 38,9 | 6923  | 1556 | 3,5                             | 2,33  | 7                                  | 7                                | 4              |

Additional standard belt widths are available in steps of 76.0 mm (2.99 in.) Additional non-standard belt widths are available in steps of 12.7 mm (0.50 in.)

|      |      |       |      |     |      |    |    |   |
|------|------|-------|------|-----|------|----|----|---|
| 1977 | 77,8 | 13839 | 3111 | 6,9 | 4,65 | 14 | 14 | 7 |
|------|------|-------|------|-----|------|----|----|---|

Additional standard belt widths are available in steps of 76.0 mm (2.99 in.) Additional non-standard belt widths are available in steps of 12.7 mm (0.50 in.)

|      |       |       |      |      |      |    |    |    |
|------|-------|-------|------|------|------|----|----|----|
| 2965 | 116,7 | 20755 | 4666 | 10,4 | 6,97 | 20 | 20 | 10 |
|------|-------|-------|------|------|------|----|----|----|

General belt tolerance is +0/-0.4% at 23°C/73°F and 50% RH. For exact belt width contact Customer Service. Non standard belt width on request.

\*Max. Load per Drive Sprocket. Belt material: PP 500 N (112 lbf)

\*\*Max. Spacing between wear strips, Carry: 152 mm (6 in.) ; Return: 304 mm (12 in.)

Any questions? Please contact us.

**Morskate Aandrijvingen BV**  
 Oosterveldsingel 47A  
 7558 PJ Hengelo (Ov)  
 The Netherlands

NL  
 T +31 (0)74 - 760 11 11  
 info@morskateaandrijvingen.nl  
 www.morskateaandrijvingen.nl

DE  
 T +49 692 - 222 34 95  
 info@morskateantriebstechnik.de  
 www.morskateantriebstechnik.de

EN  
 T +31 (0)74 - 760 11 11  
 info@morskatedrivetechnology.com  
 www.morskatedrivetechnology.com

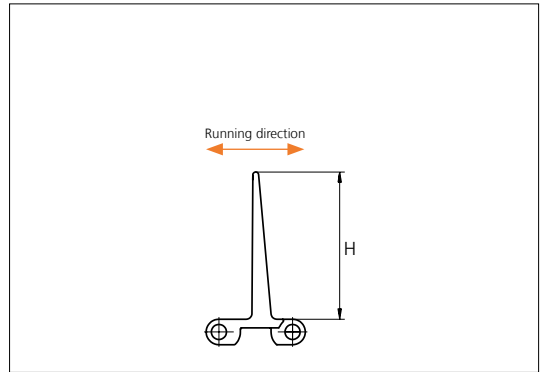
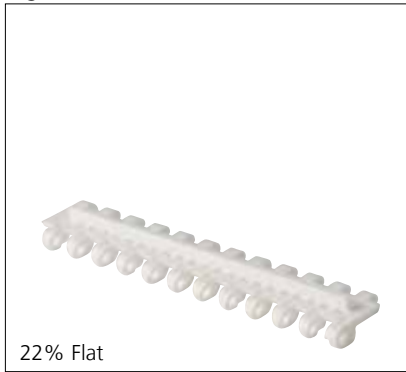
STANDARD

STRAIGHT RUNNING

PITCH 25.4 MM/1.00 IN

## Accessories

### Flight

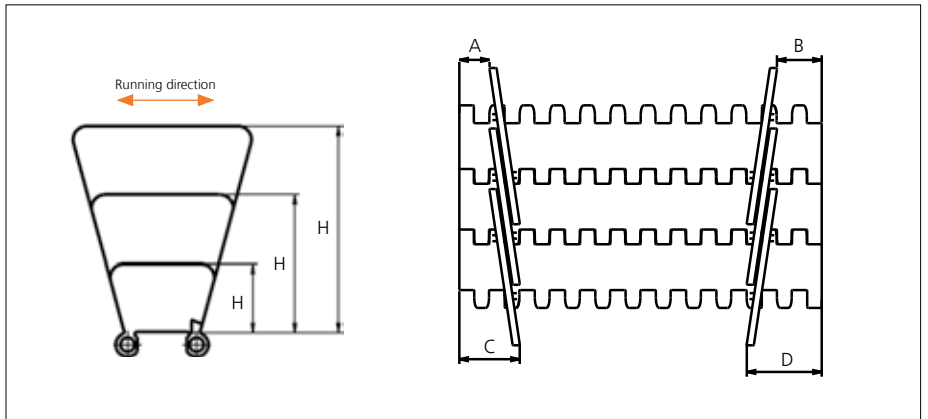


| Type     | Material & color        | H    |      | Link size | Width |      | Indent |      |
|----------|-------------------------|------|------|-----------|-------|------|--------|------|
|          |                         | mm   | in   |           | mm    | in   | mm     | in   |
| 22% Flat | PE  PP-I                | 5.0  | 0.20 | K300      | 75.9  | 2.99 | 6.4    | 0.25 |
|          |                         |      |      | K600      | 152.0 | 5.98 |        |      |
| Flat     | POM-D  PE<br>PP-I  PP-I | 25.4 | 1.00 | K600      | 152.0 | 5.98 | 0.0    | 0.00 |
|          |                         | 50.8 | 2.00 |           |       |      |        |      |
|          |                         | 76.2 | 3.00 |           |       |      |        |      |

Flat Flight: Flat on one side and with waves on the other side.  
 Minimum bricklaid indent is 38.1 mm (1.50 in); 14.0 mm (0.55 in). Increment: 12.7 mm (0.50 in).  
 Non Standard material and color: See uni Material and Color Overview.

## Accessories

### Side Guard



| Type   | Material & color | H    |      | A (Min.) |      | B (Min.) |      | C (Min.) |      | D (Min.) |      |
|--------|------------------|------|------|----------|------|----------|------|----------|------|----------|------|
|        |                  | mm   | in   | mm       | in   | mm       | in   | mm       | in   | mm       | in   |
| Closed | PP-I             | 25.4 | 1.00 | 12.5     | 0.49 | 18.5     | 0.73 | 25.5     | 1.00 | 31.5     | 1.24 |
|        |                  | 50.8 | 2.00 |          |      |          |      |          |      |          |      |
|        |                  | 76.2 | 3.00 |          |      |          |      |          |      |          |      |

Minimum indent to outside of Side Guard: 14.0 mm (0.55 in). Increment 6.4 mm (0.25).  
 Non Standard material and color: See uni Material and Color Overview.  
 Backflex radius for Side Guard: 75.0 mm (2.95 in)

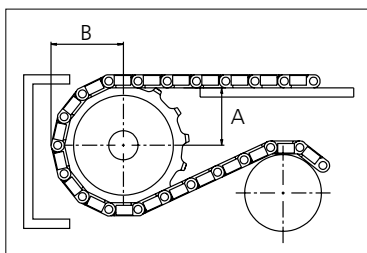
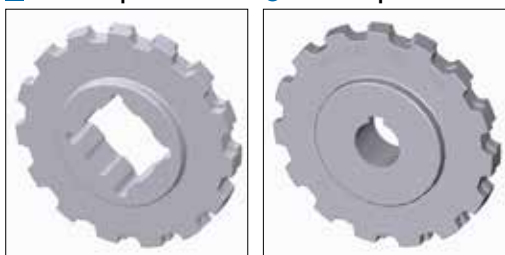
Any questions? Please contact us.

## Sprocket

| No of teeth | Bore size  |    |      |      |      |      |      |      |      |      |      |      |      |      | Overall diameter |      | Pitch-diameter |      | Hub-diameter |      | A-dimension |      | B-dimension |      | Single row/Two way | Double row/Two way | Molded PA6 LG | Machined PA6 N |      |      |      |      |      |      |      |    |      |   |      |
|-------------|------------|----|------|------|------|------|------|------|------|------|------|------|------|------|------------------|------|----------------|------|--------------|------|-------------|------|-------------|------|--------------------|--------------------|---------------|----------------|------|------|------|------|------|------|------|----|------|---|------|
|             | Pilot bore |    | in   |      | 0.75 |      | 0.78 |      | 0.98 |      | 1.00 |      | 1.18 |      |                  |      |                |      |              |      |             |      |             |      |                    |                    |               |                | 1.25 |      | 1.50 |      | 1.57 |      | 2.36 |    | 2.50 |   | 3.54 |
|             | mm         | in | 19.1 | 0.75 | 20.0 | 0.78 | 25.0 | 0.98 | 25.4 | 1.00 | 30.0 | 1.18 | 31.8 | 1.25 | 38.1             | 1.50 | 40.0           | 1.57 | 60.0         | 2.36 | 63.5        | 2.50 | 90.0        | 3.54 |                    |                    |               |                | mm   | in   | mm   | in   | mm   | in   | mm   | in |      |   |      |
| Z10         | x          |    |      |      |      | ●    | ●    | ●    | ●    |      |      |      |      |      |                  |      |                |      |              |      |             |      |             |      | 80.0               | 3.15               | 82.2          | 3.24           | 65.0 | 2.56 | 34.7 | 1.37 | 45.5 | 1.79 |      | x  | x    |   |      |
| Z12         | x          |    |      |      |      |      | ●    | ●    | ●    |      |      |      |      |      |                  |      |                |      |              |      |             |      |             |      | 96.8               | 3.81               | 98.1          | 3.86           | 70.0 | 2.76 | 43.0 | 1.69 | 53.5 | 2.11 |      | x  | x    |   |      |
| Z15         | x          |    |      |      |      |      | ●    | ●    | ●    |      |      |      |      |      |                  |      |                |      |              |      |             |      |             |      | 121.5              | 4.78               | 122.2         | 4.81           | 70.0 | 2.76 | 55.3 | 2.18 | 65.5 | 2.58 |      | x  | x    |   |      |
| Z18         | x          |    |      |      |      |      |      | ●    | ●    | ■    | ■    | ■    | ■    | ■    | ■                | ■    | ■              | ■    |              |      |             |      |             |      |                    | 146.0              | 5.75          | 146.3          | 5.76 | 70.0 | 2.76 | 67.6 | 2.66 | 77.5 | 3.05 |    | x    | x |      |
| Z19         | x          |    |      |      |      |      |      | ●    | ●    | ■    | ■    | ■    | ■    | ■    | ■                | ■    | ■              |      |              |      |             |      |             |      |                    | 154.2              | 6.07          | 154.3          | 6.07 | 70.0 | 2.76 | 71.7 | 2.82 | 81.6 | 3.21 |    | x    | x |      |

■ Molded sprocket

● Molded sprocket



Other sprocket sizes are available upon request.  
 Two-part sprockets are available upon request.  
 Round bores are always delivered with keyway.  
 Other bore sizes are available upon request.  
 uni Retainer Rings: See uni Retainer Ring data sheet.  
 Width of tooth = 12.0 mm (0.47 in)  
 Width of sprocket = 25.0 mm (0.98 in)

Max load per sprocket shown does not take bore size into account.  
 Please also ensure that sufficient size shaft is chosen for corresponding load.

For correct sprocket position: See uni Assembly Instructions for uni CNB.  
 For more detailed sprocket information, contact Customer Service.

Non standard material and color: See uni Material and Color Overview.

Any questions? Please contact us.

**Morskate Aandrijvingen BV**  
 Oosterveldsingel 47A  
 7558 PJ Hengelo (Ov)  
 The Netherlands

NL  
 T +31 (0)74 - 760 11 11  
 info@morskateaanrijvingen.nl  
 www.morskateaanrijvingen.nl

DE  
 T +49 692 - 222 34 95  
 info@morskateantriebstechnik.de  
 www.morskateantriebstechnik.de

EN  
 T +31 (0)74 - 760 11 11  
 info@morskatedrivetechnology.com  
 www.morskatedrivetechnology.com